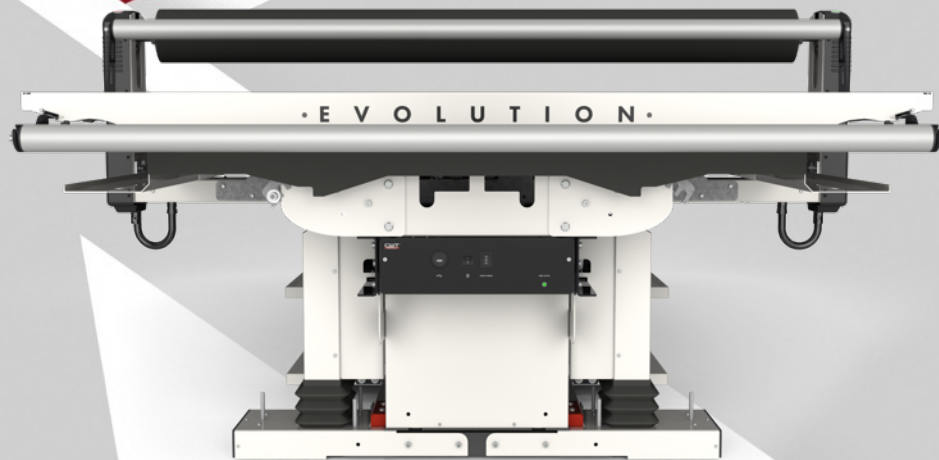


# CWT Evolution

The next generation worktable.  
Pre-release information for distributors



Professional solutions for laminating and trimming.



# The next generation worktable

## Background and goal

CWT Worktools has become the world-leading producer of flatbed applicators because of an innovative range of products with proven quality and with satisfied customers.

We currently have a wide model range consisting of 10 flatbed applicators and our original model has already been on the market for 6 years.

Our mission is to develop new generations of worktables with new technologies and innovations according to customer needs. We promise the best products at the best prices.

Six years ago we developed the gantry-free flatbed applicator giving the user free access to the roller. Today we are proudly introducing a new generation of flatbed applicator and worktable, the brand-new model **CWT Evolution!**





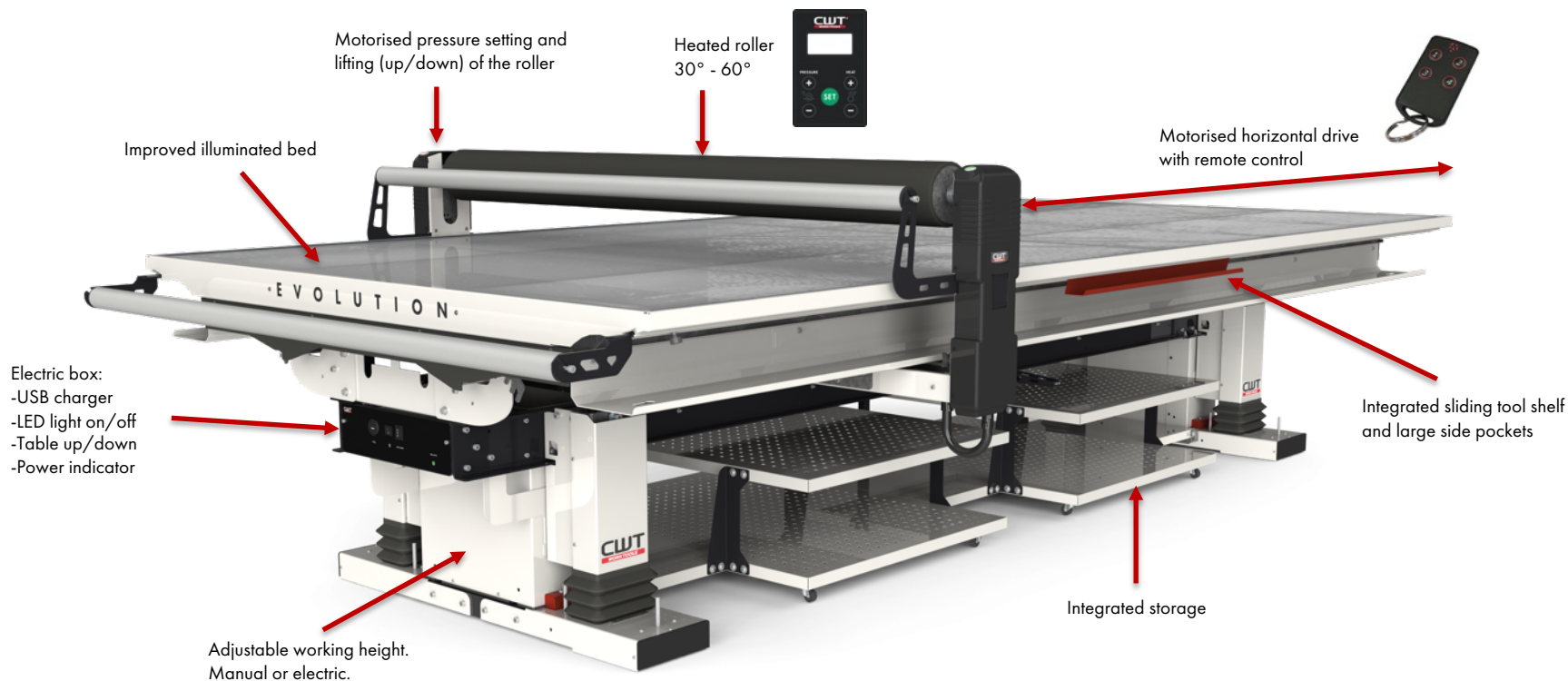
## CWT Evolution - The next generation worktable



Professional solutions for laminating and trimming.



# New features CWT Evolution



Professional solutions for laminating and trimming.

# All electrical - Motorised pressure setting and lifting of the roller

## Say goodbye to the air compressor!

Motorised all electrical pressure setting and lifting of the roller.

Up to 7 different pressures can be chosen to fit whatever materials you are working with.

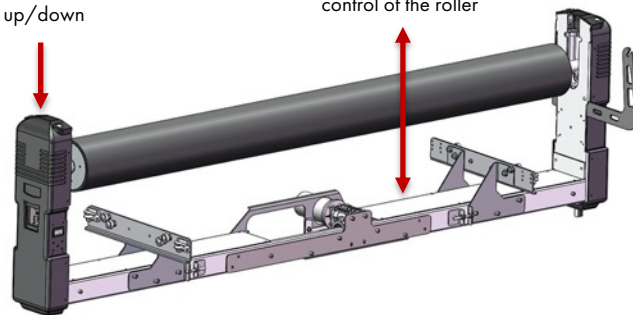
Another advantage with this solution is that the roller doesn't drop down hard on the table top after reaching the end of the substrate, it will remain in upward position.

Its also allows working on thick narrow boards on one side of the table as the electric system will not push down more on one side, causing different pressure on each side, like it used to do with pneumatic rollers.

Using electricity gives us the advantage to adjust the speed of the roller up and down, control the roller pressure and control the horizontal velocity of the roller.

Controls for speed and lifting up/down

Motorized vertical control of the roller



Choose between 7 different pressure settings



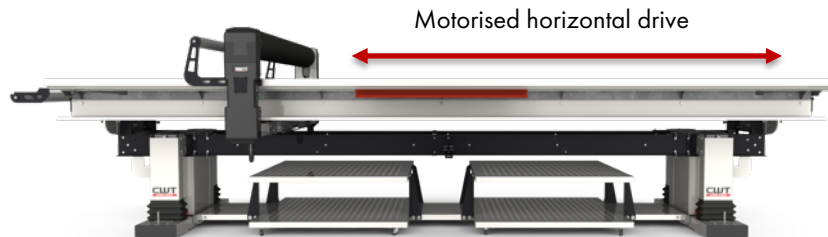
# Motorised horizontal drive

## Motorized glide beam, or not.

We proudly present the next big innovation on CWT Evolution. Motorised horizontal drive.

The operator can at anytime switch from manual to motorised drive with just a push of a button.

Combined with the heated roller a fully controlled lamination process is achieved. This means lamination and application of self-adhesive film can for the first time be preformed in compliance with film-manufacturer's specifications in a flatbed applicator.



Operated by remote





# Heated roller

## Heat assisted roller for improved lamination results and more speed.

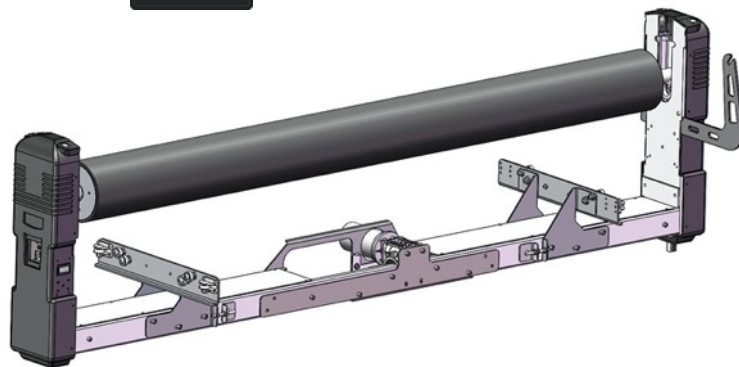
During many years, a frequent request from our customers have been to have a heat assisted roller.

Now our engineers have come up with this brilliant solution for a heated roller. Our new innovative system including stepless temperature setting and a heat assist roller which looks, feels and has the same features as a cold roller.

CWT Evolution can be equipped with cold or heat-assisted roller as standard.



Stepless temperature setting  
from 30° to 60°



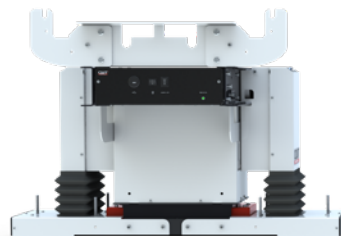


## Ergonomic worktable

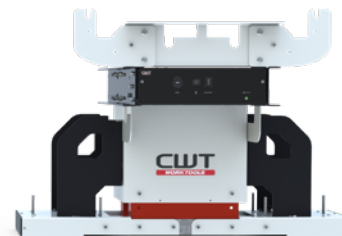
**CWT Evolution can be height adjusted, choose between electrical and manual.**

Choosing the electrical option gives the operator the possibility to quickly change an ergonomic working height between 800mm – 1090mm by just a click of a button.

With manual mechanical height adjustment a fixed working height can be set. Choosing between 6 different settings with 50mm spacing between 800mm – 1050mm.



Electrical



Manual mechanical



# Worktable

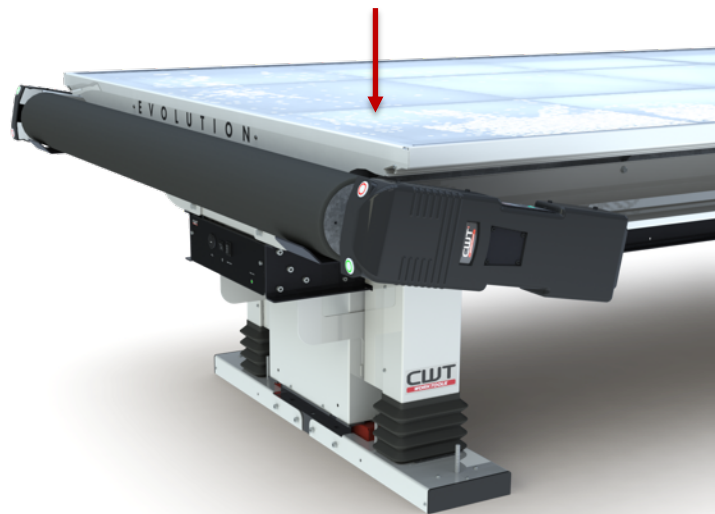
## We want CWT Evolution to be more than just a flatbed applicator

After visiting our customers and asked them how they use their flatbed applicators, we realize that many operators use their table as a complete work station where they cut, laminate and do multiple other jobs, not because it's a flatbed applicator, but because its a big surface.

So why not use the whole surface?

On the new CWT Evolution you can fold away the gantry, combined with the electrical adjustable height you have your own multi purpose and personalized working table.

Fold away the roller and get a 5,3m<sup>2</sup> illuminated cut-work-table.





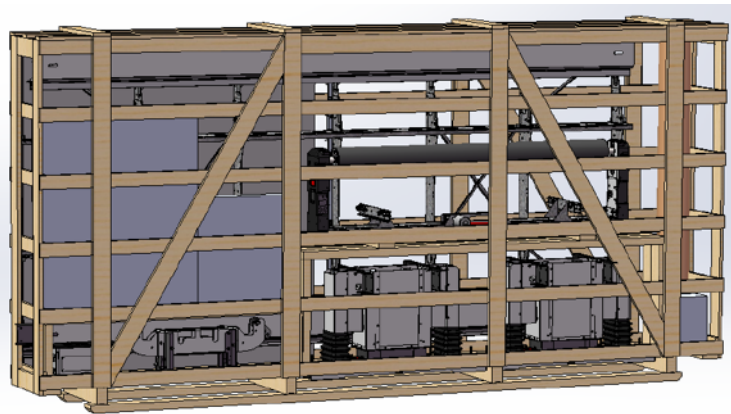
# Logistic solution

## A winning concept

The modular design makes the CWT worktable easy to transport and install.

CWT Evolution are delivered in compact packages, up to 80% less in volume compared to our competitors.

The low transportation cost and environmental impact taken aside, the slim package can easily be brought inside your workshop through normal sized doors.





# CWT Evolution

Introducing the first model in our new model program

## CWT 1737 EVO

Working length	3125mm
Working width	1690mm
Roller width	1660mm



Professional solutions for laminating and trimming.



# CWT Evolution

**EVO is a modular concept with many possibilities for customization**

All Evo models are equipped with **motorised all electrical pressure setting and lifting of the roller** and includes a **utility pack** (cutting mat, roll holder for bed end, 2 x mini roll cradles, 2 x sliding pockets).

We give you 3 examples of possible configurations. **Contact us for a demo unit offer!**



## **EVO Basic**

Manual adjustable legs  
Cold roller

Recommended price (RRP):  
13.700,00 EUR



## **EVO Platinum**

Electric adjustable legs  
Cold roller  
LED illumination

Recommended price (RRP):  
16.740,00 EUR



## **EVO Fully loaded**

Electric adjustable legs  
Heated roller  
Horizontal drive  
LED illumination  
Storage kit

Recommended price (RRP):  
20.750,00 EUR



## Introduction to the market

This is an introduction to the new model program of CWT Evolution.

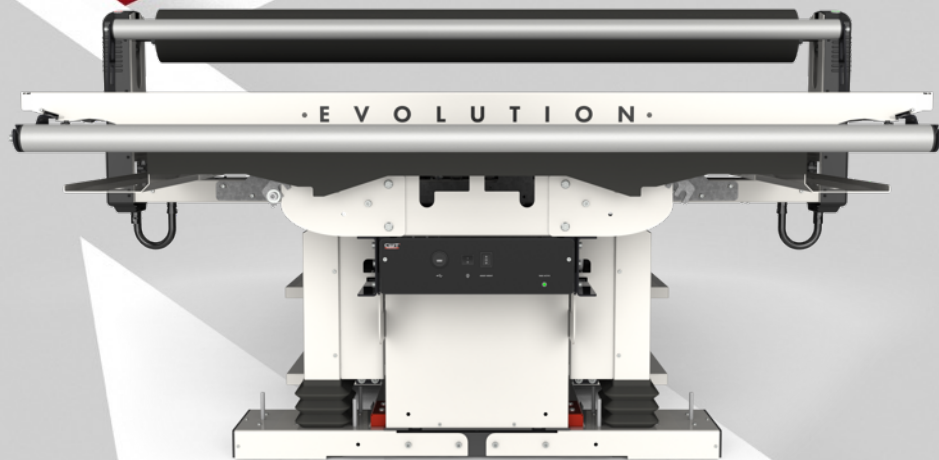
In January we are releasing a complete marketing package including:

- New price lists
- Product data sheets
- Manuals
- Updated website
- And much more

With only a few months to go we are preparing the last bits and pieces for the European launch of Evolution at FESPA Madrid.



**Available to order  
and shipping starts  
from January 2020**



Professional solutions for laminating and trimming.

**CWT**  
WORK TOOLS